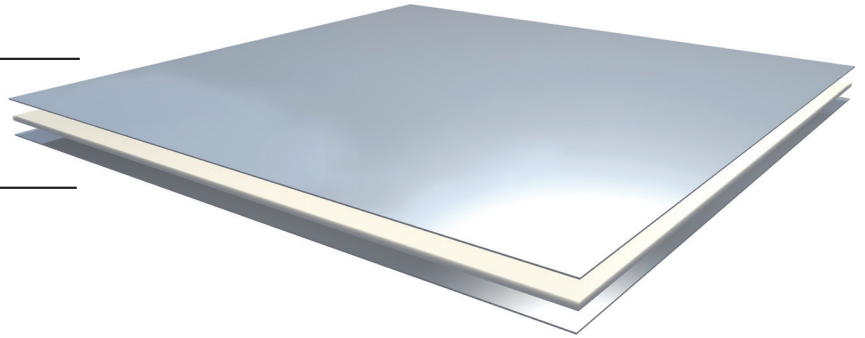


0.5 mm top coating of aluminium ———
 3.0 mm core material
 0.5 mm top coating of aluminium ———



BEMO-BOND Product information of Class A2-s1, do

Total panel thickness:	4,0 mm
Covering layer inner / outer Aluminum 3105-H14 and / or 3005-H14:	0,5 mm
Core material mineral, non-flammable:	3,0 mm
Flexible plate lengths:	1.000 mm to 7.200 mm
Standard width:	1.250 mm or 1.540mm
Possible width depending on the surface:	750 mm to 2.050 mm
Weight/m ² :	8,4 kg/m ²
Fire classification EN 13823, EN ISO 1716, EN 13501-1:	A2-s1, do
Surface/Coatings:	BEMO-FLON/Lumiflon
Other surface:	Anodizing, special surfaces
Gloss level (GU) standard:	15 or 30 GU (gloss units)
Degree of gloss (GU) feasibility:	10 GU-80 GU
Protective film available, self-adhesive max. weathering:	3-6 months

Product tolerances max:
 Width: +/- 2.0 mm, length: +/-4.0 mm, thickness: +/-0.2 mm, diagonal deviation: max: 5.0 mm.

The composite panels must be laid according to the BEMO installation instructions.

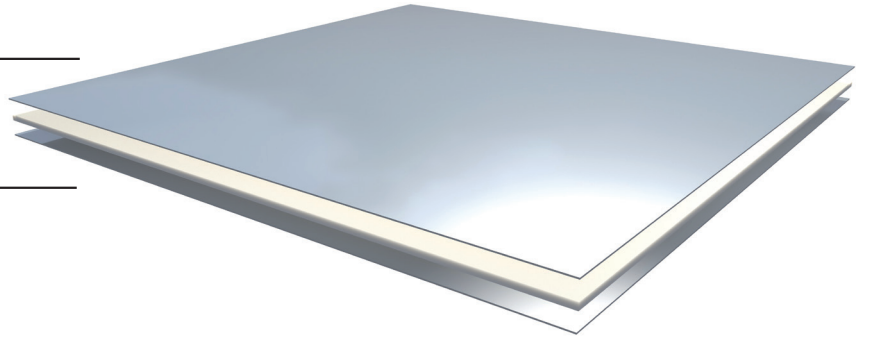
Title
 Product Specification Sheet

This drawing is exclusively our property. It may not be copied or given to third parties without our prior consent. All rights, including rights created by patent grant or registration of a utility model or design, are reserved.

Type
 BEMO-BOND A2-s1, do

18/03/2019

0.5 mm top coating of aluminium ———
 3.0 mm core material
 0.5 mm top coating of aluminium ———



BEMO-BOND Product information of Class B-s1, do

Total panel thickness:	4,0 mm or 6,0 mm
Covering layer inner / outer Aluminum 3105-H14 and / or 3005-H14:	0,5 mm
Core material grey or whitish:	3,0 mm or 5,0 mm
Flexible plate lengths:	1.000 mm to 7.200 mm
Standard width:	1.270 mm or 1.575 mm
Possible width depending on the surface:	750 mm to 2.050 mm
Weight/m ² :	7,5 kg/m ² or 10,9 kg/m ²
Fire classification EN 13823, EN ISO 11925-2, EN 13501-1:	Class B-s1-do
Fire classification DIN 4102 Part 1:	B1 hardly inflammable
Surface/Coatings:	BEMO-FLON/Lumiflon
Other surface:	Anodizing, special surfaces
Gloss level (GU) standard:	15 or 30 GU (gloss units)
Degree of gloss (GU) feasibility:	10 GU-80 GU
Protective film available, self-adhesive max. weathering:	3-6 months

Product tolerances max:
 Width: +/- 2.0 mm, length: +/-4.0 mm, thickness: +/-0.2 mm, diagonal deviation: max: 5.0 mm.

The composite panels must be laid according to the BEMO installation instructions.

Title
 Product Specification Sheet

This drawing is exclusively our property. It may not be copied or given to third parties without our prior consent. All rights, including rights created by patent grant or registration of a utility model or design, are reserved.

Type
 BEMO-BOND B-s1, do

18/03/2019