

# Certificate

**Certified Passive House component**  
for cold climate, valid until 31.12.2021

Category: **Facade anchor**  
Manufacturer: **BEMO Systems GmbH**  
**74532 Ilshofen-Eckartshausen**  
**GERMANY**  
Product name: **Tekofix A++**

**The following criteria were used in awarding this certificate:**

## Efficiency Criterion

In a typical application\*, the construction fulfills the requirements of

$$\text{Eff}_{\text{fa}} \leq 0.200 \text{ W/(kNK)}$$

## Comfort Criterion

The inner surface must be warm enough to prevent mold as well as uncomfortable down-draught and radiation losses.

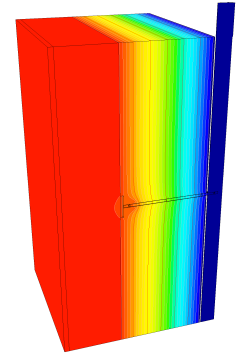
$$\theta_{\text{i,min}} \geq 17^{\circ}\text{C}$$

## Thermal data of the certified component

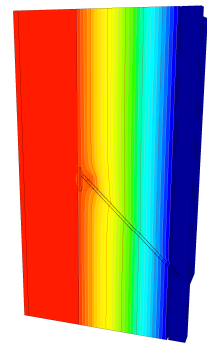
	Thermal bridge coefficient	Minimum interior surface temperature
	$\chi$ [W/K]	$\theta_{\text{i,min}}$ [°C]
Sliding point (0°)	0.0024	19.50
Sliding point (45°)	0.0016	19.51
Fixed point**	0.0041	19.42
FP sheet metal	0.0029	19.50

\* The criterion has been validated with a representative facade of a school building

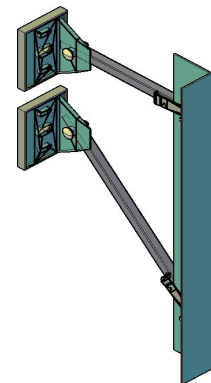
\*\* The fixed point comprises both, a horizontal and an inclined stainless-steel anchor



Isothermal map of the horizontal anchor



Isothermal map of the inclined anchor



Representation

cold climate



**CERTIFIED COMPONENT**

Passive House Institute

# Data sheet BEMO Systems GmbH, Tekofix A++

**Manufacturer** BEMO Systems GmbH  
 Max-Eyth-Straße 2, 74532 Ilshofen-Eckartshausen, GERMANY  
 www.bemo.com

Criteria validated based on reference facade	<b><math>\Delta_U</math> [W/m<sup>2</sup>K]</b>
<b>LC VI</b>	<b>0.0051</b>

In order to validate the suitability, the manufacturer provides a static calculation and an associated installation plan for the reference facade.

Load class / Facade weight		Thermal bridge coefficients [W/K]	
LC	[kN/m <sup>2</sup> ]	X <sub>FP</sub>	X <sub>SP</sub>
VI	0.60	0.0041	0.0024
Efficiency [W/(kNK)]	$\Delta_U$ [W/m <sup>2</sup> K]	Quantity / m <sup>2</sup>	
		FP	SP
0.0085	0.0051	0.721	0.891



Installation-plan reference facade of the certified component

Load-class (LC)	Facade cladding	Facade weight [kN/m <sup>2</sup> ]	Efficiency criterion fulfilled?
I	ACM	0.10	yes
II	HPL	0.15	yes
III	Fibre-cement-plates	0.20	yes
IV	Fibre-cement-plates	0.25	yes
V	Glassfacade	0.30	yes
VI	Marble	0.60	yes

The classification criteria and the load class allocation can be found in the current criteria "Zertifizierte Passivhaus Komponente – Fassadenanker, Version 2.0, 08.05.2017".