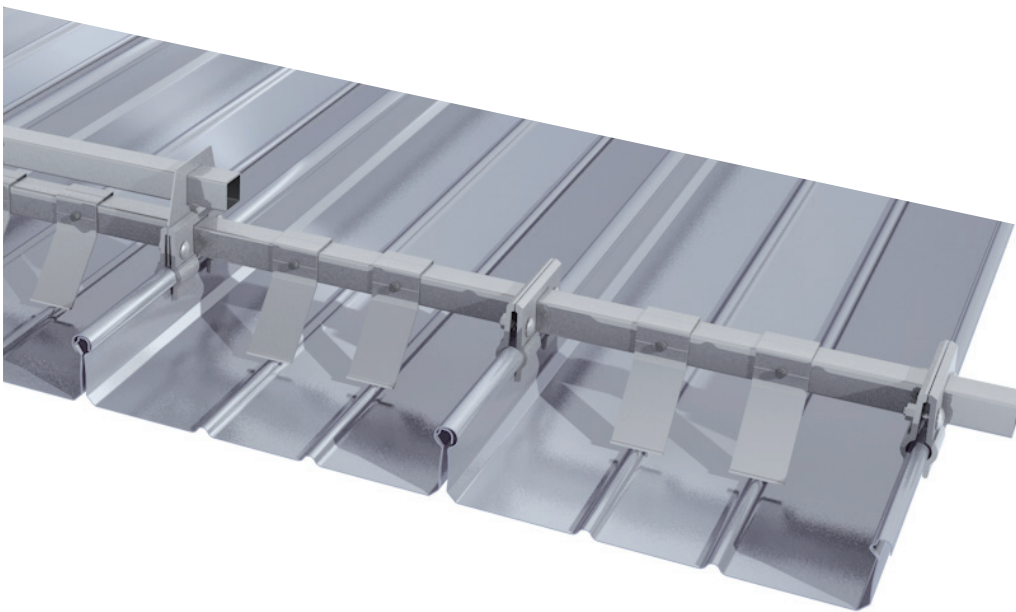


BEMO SYSTEM-ACCESSORIES: THE SNOW GUARD SYSTEM



- ❖ The BEMO snow guard system fits perfectly to the folded BEMO standing seam panels.
- ❖ The system is made of extruded aluminum parts, therefore corrosion-free and durable.
- ❖ The assembly is very simple.
- ❖ If necessary, the system can be coated with the same roof color.

System components:

Art. No.	Product
101904	Snow stopper Q for standing seam N50 / width 50 mm To be used with the standing seam N50
101905	Snow stopper Q for standing seam N65 / width 50 mm To be used with the standing seam N65
101901	Snow guard retaining tabs Q made of natural aluminum, including 2 x M8 screw set for system Q 34 x 34
101900	square tube 34 made of natural aluminum, thickness 2.0 mm
For particularly high requirements:	
101906	Extension element Q made of aluminum For holding two pipe layers (only in combination with the BEMO snow guard)

